

DEFENDER

SAVING THE HUMAN RACE

INSTRUCTION
MANUAL



 **MIDWAY**

WARNING

WARNING: READ BEFORE USING YOUR PLAYSTATION®2 COMPUTER ENTERTAINMENT SYSTEM.

A very small percentage of individuals may experience epileptic seizures when exposed to certain light patterns or flashing lights. Exposure to certain patterns or backgrounds on a television screen or while playing video games, including games played on the PlayStation 2 console, may induce an epileptic seizure in these individuals. Certain conditions may induce previously undetected epileptic symptoms even in persons who have no history of prior seizures or epilepsy. If you, or anyone in your family, has an epileptic condition, consult your physician prior to playing. If you experience any of the following symptoms while playing a video game – dizziness, altered vision, eye or muscle twitches, loss of awareness, disorientation, any involuntary movement, or convulsions – IMMEDIATELY discontinue use and consult your physician before resuming play.

WARNING TO OWNERS OF PROJECTION TELEVISIONS:

Do not connect your PlayStation 2 console to a projection TV without first consulting the user manual for your projection TV, unless it is of the LCD type. Otherwise, it may permanently damage your TV screen.

USE OF UNAUTHORIZED PRODUCT:

The use of software or peripherals not authorized by Sony Computer Entertainment America may damage your console and/or invalidate your warranty. Only official or licensed peripherals should be used in the controller ports or MEMORY CARD slots.

HANDLING YOUR PLAYSTATION 2 FORMAT DISC:

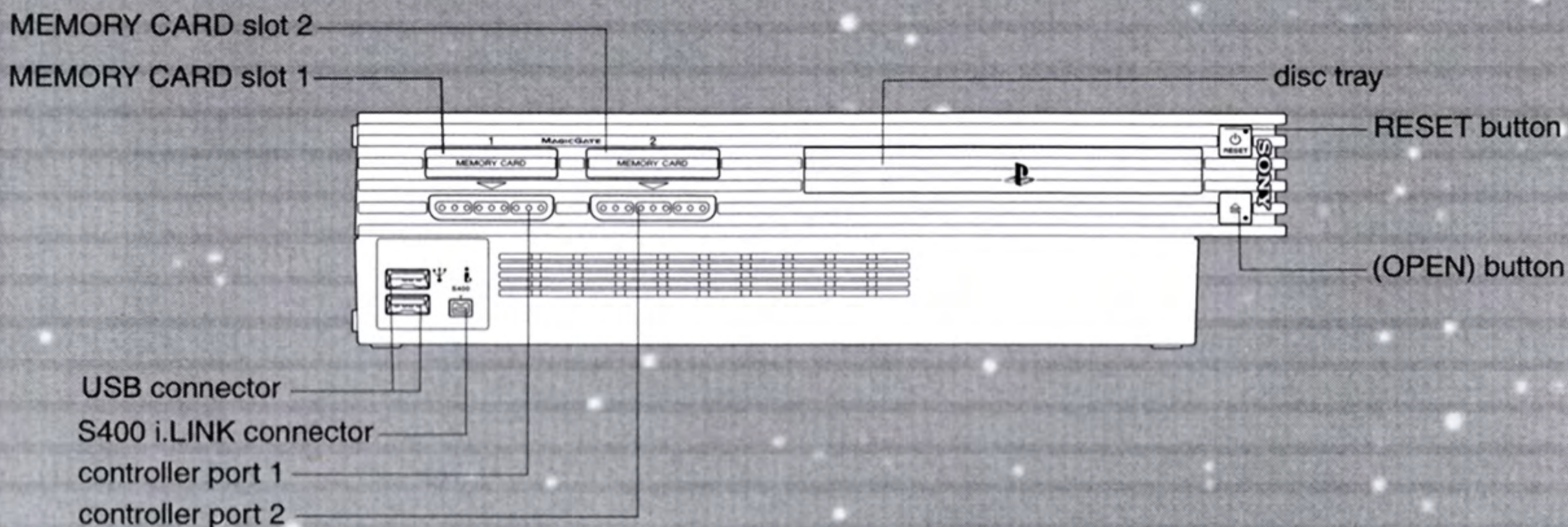
- This disc is intended for use only with PlayStation 2 consoles with the NTSC U/C designation.
- Do not bend it, crush it or submerge it in liquids.
- Do not leave it in direct sunlight or near a radiator or other source of heat.
- Be sure to take an occasional rest break during extended play.
- Keep this compact disc clean. Always hold the disc by the edges and keep it in its protective case when not in use. Clean the disc with a lint-free, soft, dry cloth, wiping in straight lines from center to outer edge. Never use solvents or abrasive cleaners.

TABLE OF CONTENTS

| | |
|--------------------------------------|----------------|
| GETTING STARTED | 2 - 3 |
| STARTING UP | 4 |
| GAME CONTROLS | 5 |
| OPTIONS | 6 - 7 |
| NEW GAME | 8 |
| PLAYING THE GAME | 9 - 11 |
| 2 PLAYER | 12 |
| DEFENDER UNIVERSE | 13 |
| SHIP TYPES | 14 |
| KEY PLAYERS & MANTI | 15 |
| GAME CREDITS | 16 - 19 |
| WARRANTY | 21 |

GETTING STARTED

SETTING UP YOUR PLAYSTATION®2



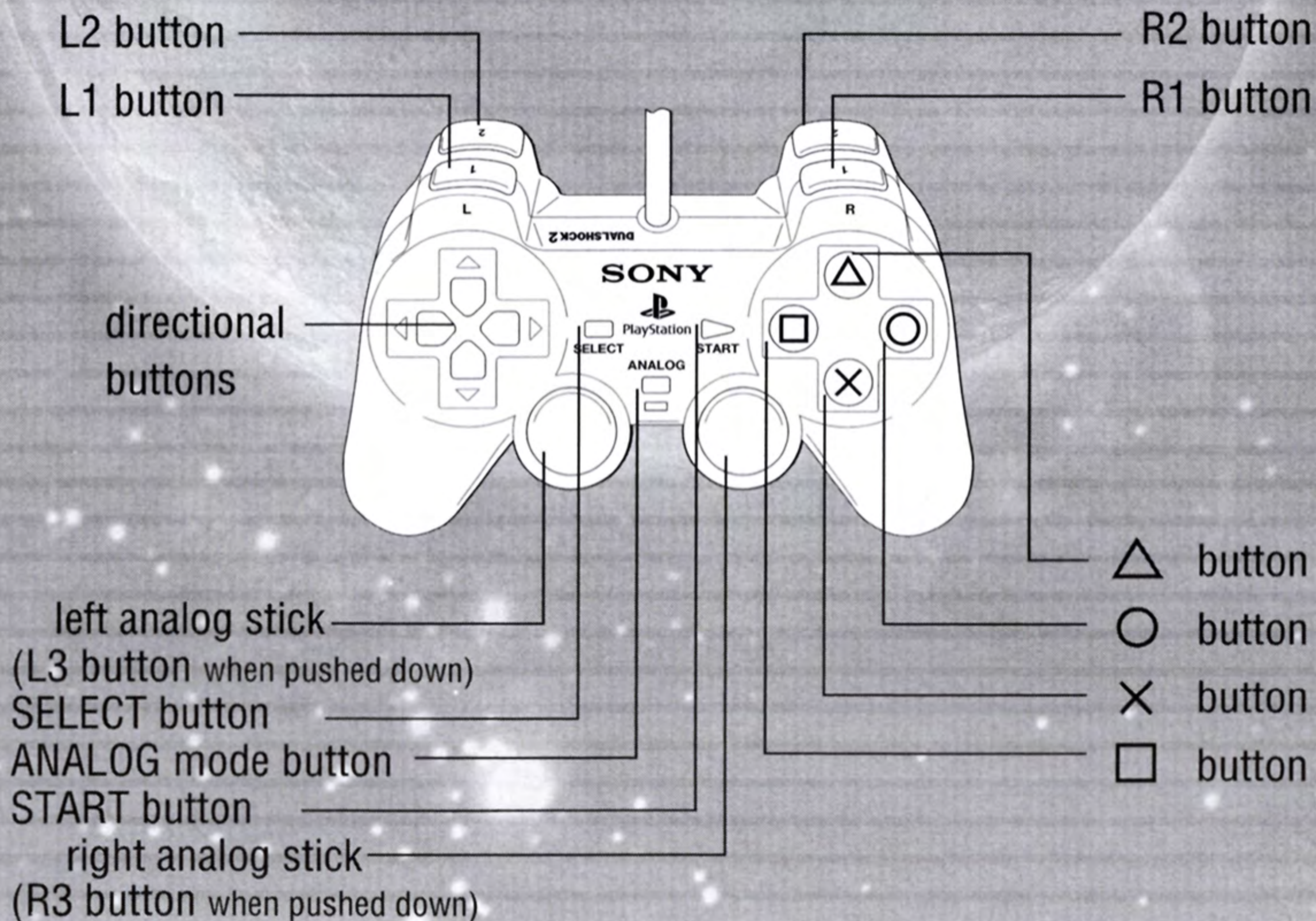
Set up your PlayStation®2 computer entertainment system according to the instructions in its Instruction Manual. Make sure the MAIN POWER switch (located on the back of the console) is turned on. Press the RESET button. When the power indicator lights up, press the open button and the disc tray will open. Place the (Defender®) disc on the disc tray with the label side facing up. Press the open button again and the disc tray will close. Attach game controllers and other peripherals, as appropriate. Follow on-screen instructions and refer to this manual for information on using the software.

MENU & SUB-MENU NAVIGATION

Throughout this manual, **↑**, **↓**, **←** and **→** will signify pressing up, down, left and right on the left analog stick or directional buttons. To navigate through the game menus (i.e. Options), use the left analog stick or directional buttons (**↑**, **↓**, **←** or **→** depending on the menu) to highlight a selection. To activate a selection or access the next menu, press the **⊗** button. To go back to the previous menu and/or cancel the previous selection, press the **△** button.

GETTING STARTED

DUALSHOCK®2 ANALOG CONTROLLER CONFIGURATIONS



Take a moment to familiarize yourself with the button layout of your DUALSHOCK®2 analog controller. These buttons will be referred to throughout this Instruction Manual. Please see the following pages for the default game controls as well as how to navigate through the game's menus.

QUITTING A GAME IN PROGRESS

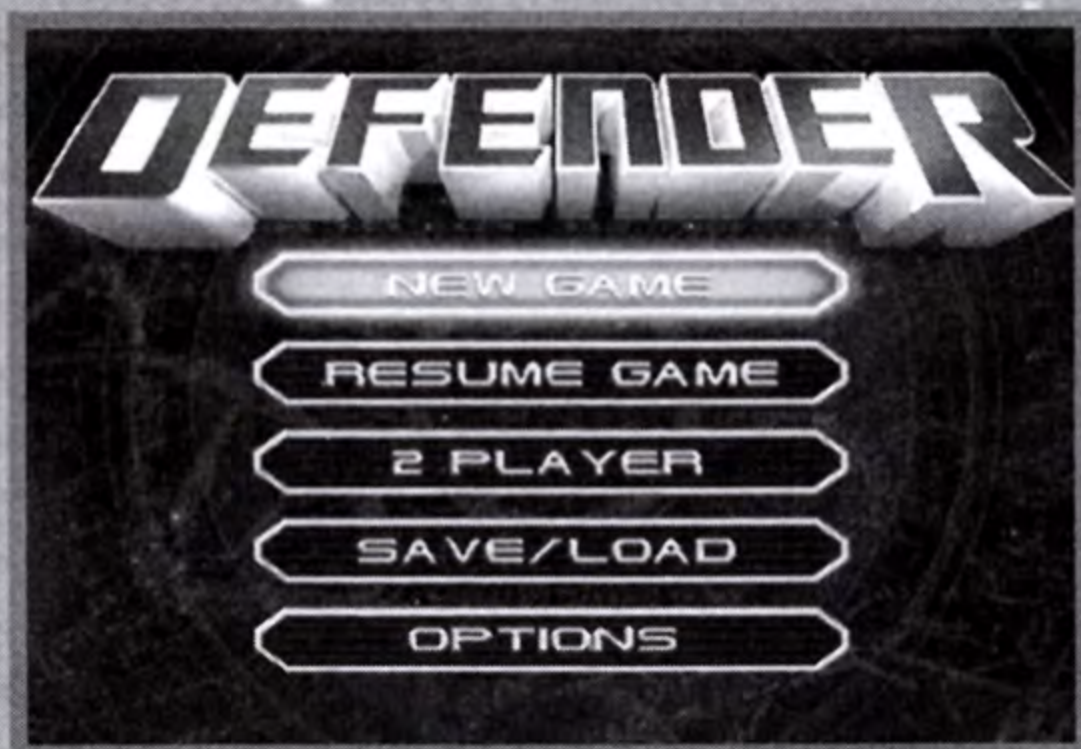
To quit a game in progress, press the START (▶) button during the game. The Pause Options screen will appear. Select QUIT and press the × button. Next select YES and press the × button once again and you'll be brought to the Mission Failed screen.

STARTING UP

IMPORTANT AUTOSAVE INFORMATION

Before you begin playing, it's advised that you insert a memory card (8MB) (for PlayStation®2) into MEMORY CARD slot 1 of your PlayStation®2 console. This game uses an "autosave" feature, which means that the game will automatically load and save game data on your memory card if it's inserted. Game data such as game statistics and unlocked items will be saved and loaded every time you exit or start the game. After the game's Title screen, if you have any saved game data it'll be loaded automatically and you'll proceed to the Main menu. If you don't have saved game data or a memory card, you'll be informed of this and will have to press the **X** button to continue to the Main menu.

MAIN MENU



The Main menu is where you'll be able to play different game modes as well as change a few options in the game. Below is a breakdown of each sub-menu featured on the Main menu.

NEW GAME

Defender offers an exciting single player Campaign mode. Blast your way through aliens and build offensive and defensive ground strategies. Either way, you are the last line of defense for the human race.

RESUME GAME

This mode lets you jump right back into the last game played.

2 PLAYER

2 PLAYER has two game modes. More information can be found on Page 12.

SAVE & LOAD

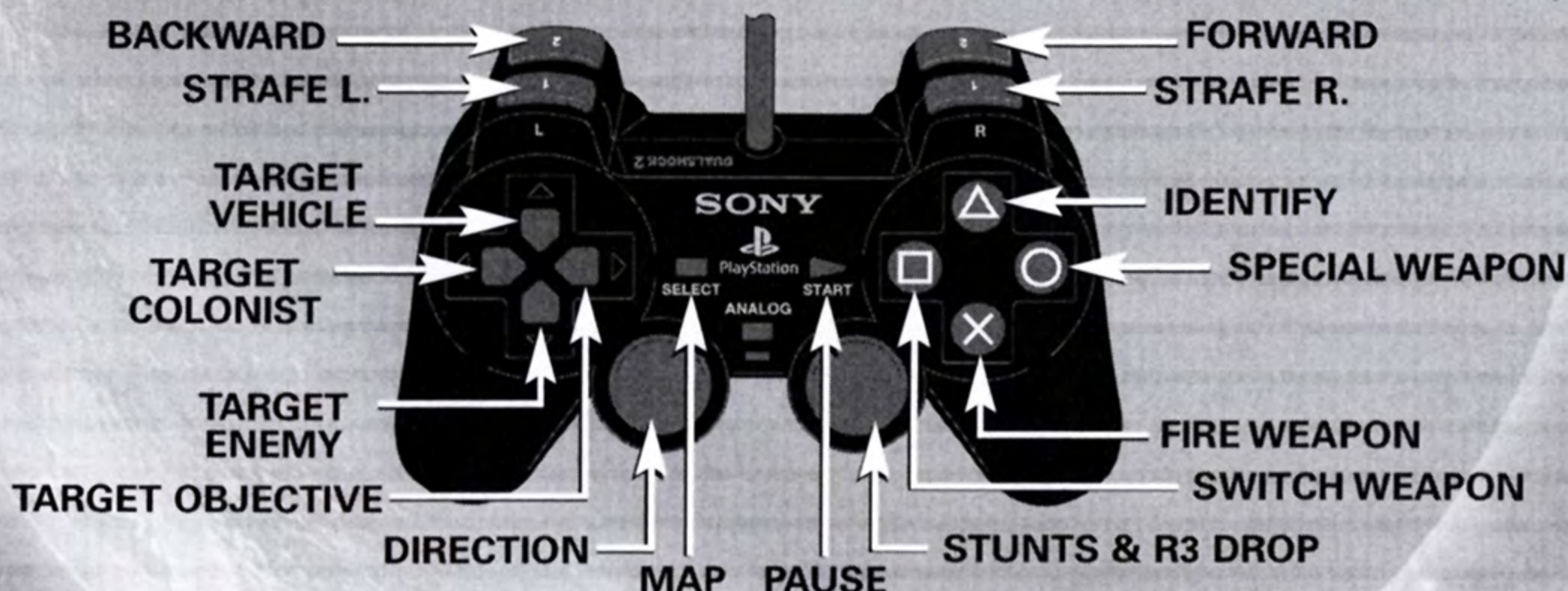
Depending on the memory available on your memory card, it'll be possible to save up to five games. Each possible saved game is in a slot which is either empty or tells the mission on which the game was saved.

OPTIONS

This will access the game's Options menu. The Options menu allows you to change a few of the game's features. See Pages 6-7 for information on what can be found in the Options menu.

GAME CONTROLS

CONTROLLER CONFIGURATION "A" NORMAL



NOTE: Controller Configuration "A" Normal is the default Defender controller configuration. To change configurations, see Page 7 for Options/Control sub-menu. Defender is only compatible with the DUALSHOCK®2 analog controller.

left analog stick:

Pressing **↑**, **↓**, **←** or **→** on the left analog stick causes you to pitch up and down as well as turn left or right.

right analog stick:

When your ship is moving forward, pressing **↑** does a 360° loop, **↓** does a 180°, **←** or **→** does a barrel roll in either direction.

R3 button:

Drop colonist/units

X button:

Fires currently selected weapon.

R2 button:

Forward thrusters.

L2 button:

Reverse thrusters.

L1 button (Strafe L.)/R1 button (Strafe R.):

Moves your ship to the left or right.

square button:

Switches weapons. The current weapon you have selected (and its ammo/charge) is indicated by an icon in the top right corner of the screen.

circle button:

Activates ship's special weapon.

triangle button:

Identifies certain objects.

← on the directional buttons:

Targets the colonist.

→ on the directional buttons:

Targets the objective.

↑ on the directional buttons:

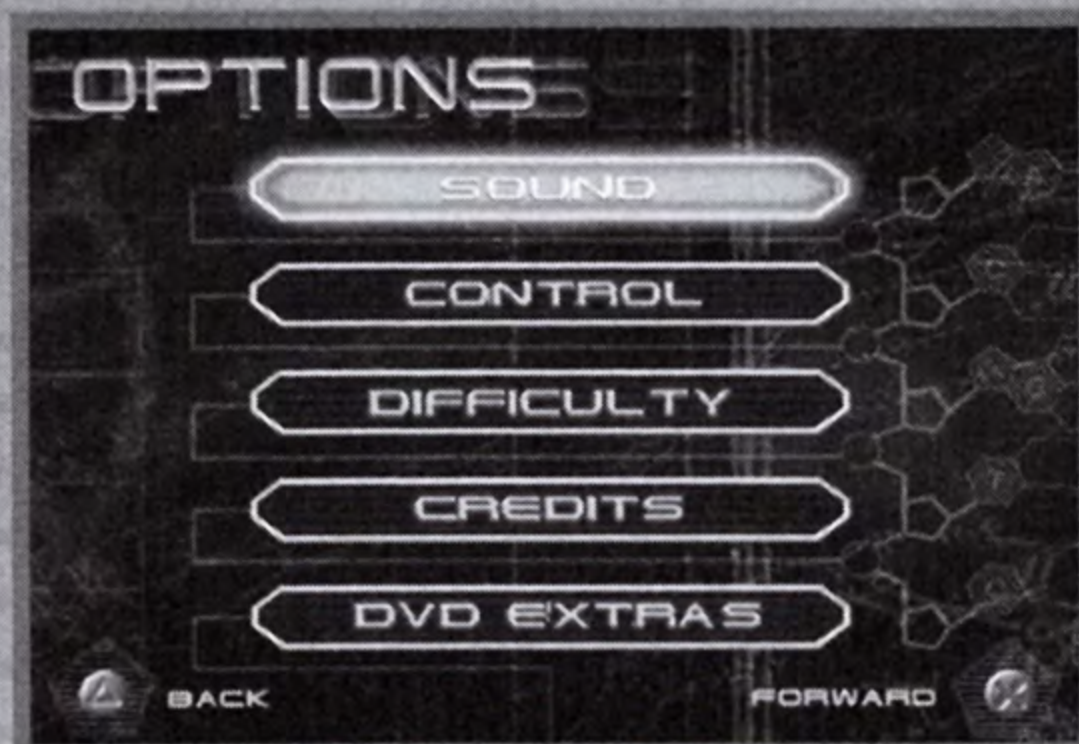
Targets the vehicle.

↓ on the directional buttons:

Targets the enemy.

OPTIONS

OPTIONS MENU



At the Main menu, highlight OPTIONS and press the **X** button to access the game's Options menu. The Options menu lets you adjust the sound volumes in the game, select different controller configurations and more.

NOTE: Each time you make a change in any of the Options sub-menus, the game will "autosave" this data on your memory card. If you don't have a memory card inserted, your data will not be saved. Press the **X** button to continue back to Options menu.

SOUND

The Sound sub-menu includes options for VOLUME and MUSIC.

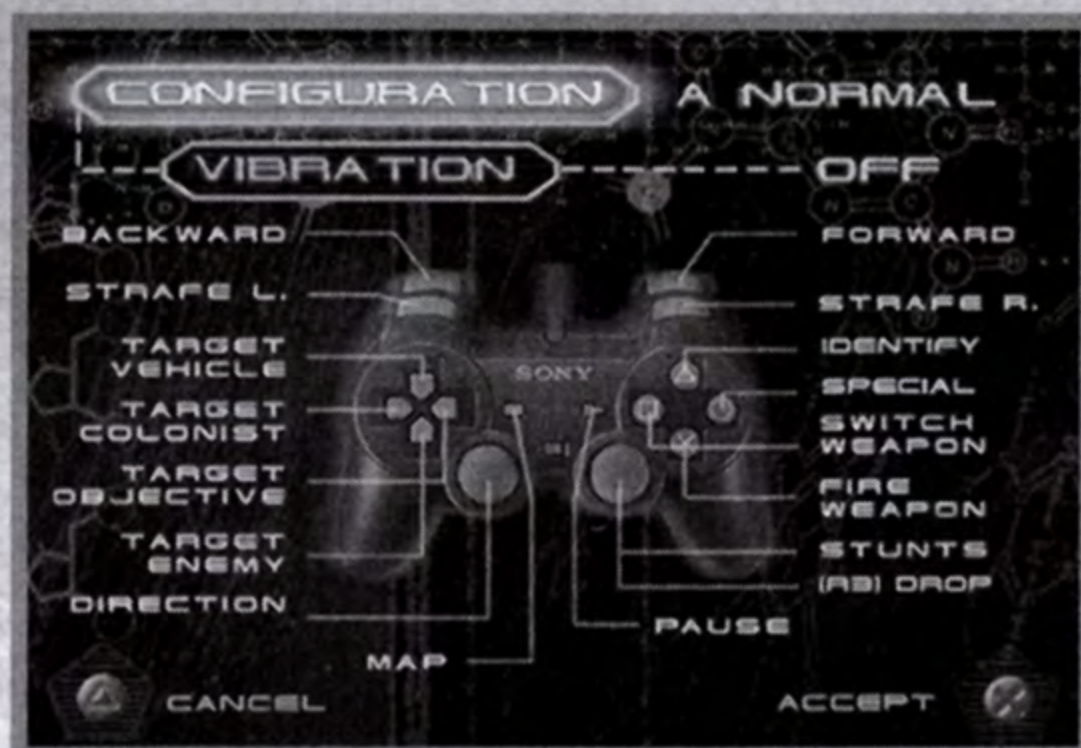
In VOLUME, you can set the level for Music, FX (sound effects), and Voice. Select a particular feature to adjust by pressing **↑** or **↓** on the left analog stick. Next, press **←** or **→** on the left analog stick to slide the bar left or right. The bar settings will control the volume with the far right being the highest setting and the far left being the lowest. When you are finished, press the **X** button to lock changes and return to the Sound sub-menu.



In MUSIC, you can change the music played in the menu and briefing screens. Press **↑** or **↓** on the left analog stick to highlight your music choice. Press the **X** button to complete your selection.

OPTIONS

CONTROLS



Choose between several different controller configurations and turn the vibration setting ON/OFF in the Control sub-menu. To adjust the configuration, press **↑** or **↓** on the left analog stick to highlight the control features you'd like to adjust. Press **←** or **→** on the left analog stick to cycle through your various choices. When you are finished making adjustments, press the **⊗** button to accept or the **△** button to cancel.

This Control menu can also be accessed by Player 1 and Player 2 when in the 2 PLAYER menu.

DIFFICULTY

Here you will be able to decide how skilled a Defender pilot you are. Choose between Rookie, Veteran or Elite. Press **↑** or **↓** on the left analog stick to highlight the level you'd like to play, then press the **⊗** button to accept.

CREDITS

Looking for the amazing people who brought you this game? Simply highlight CREDITS by pressing **↑** or **↓** on the left analog stick and press the **⊗** button to watch the presentation.

DVD EXTRAS

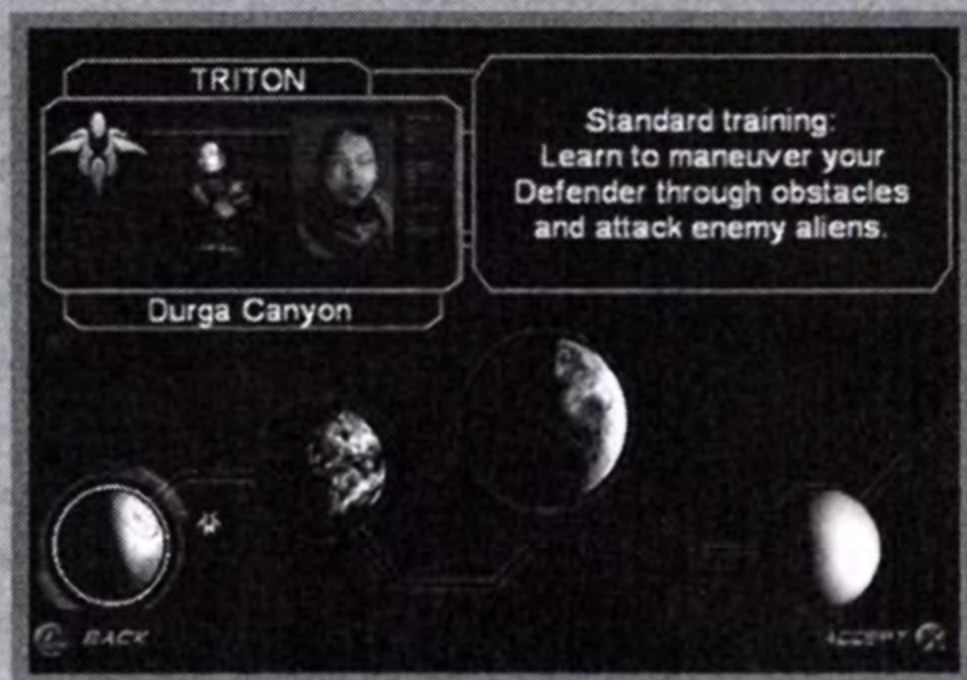
Here in the DVD Extras section you can watch bonus material that includes Defender: A Historical Perspective and The Making of Defender. You'll also be able to preview a couple of other great Midway titles such as Dr. Muto™ and Haven: Call of the King™.

NEW GAME

STARTING A NEW GAME

From the Main menu press **↑** or **↓** on the left analog stick to highlight NEW GAME. Next press the **⊗** button to make the selection and begin a new game.

The Difficulty menu will appear. Press **↑** or **↓** to choose between Rookie, Veteran or Elite. Press the **⊗** button to accept.



The Mission Select Screen is where you'll choose your mission. Start off by selecting a planet. Press **←** or **→** on the left analog stick to move through each planet. Press **↑** or **↓** on this same control to scroll through the various missions which are available for each planet. As you advance levels in Defender, more missions will unlock. Once you have selected your mission, press the **⊗** button to accept.

NOTE: Throughout this game, when making a selection from any of the sub-menus, each time you finish making a selection a smaller window will pop up to confirm your decision. Press the **⊗** button to accept or the **△** button to cancel.



SPACESHIP SELECTION

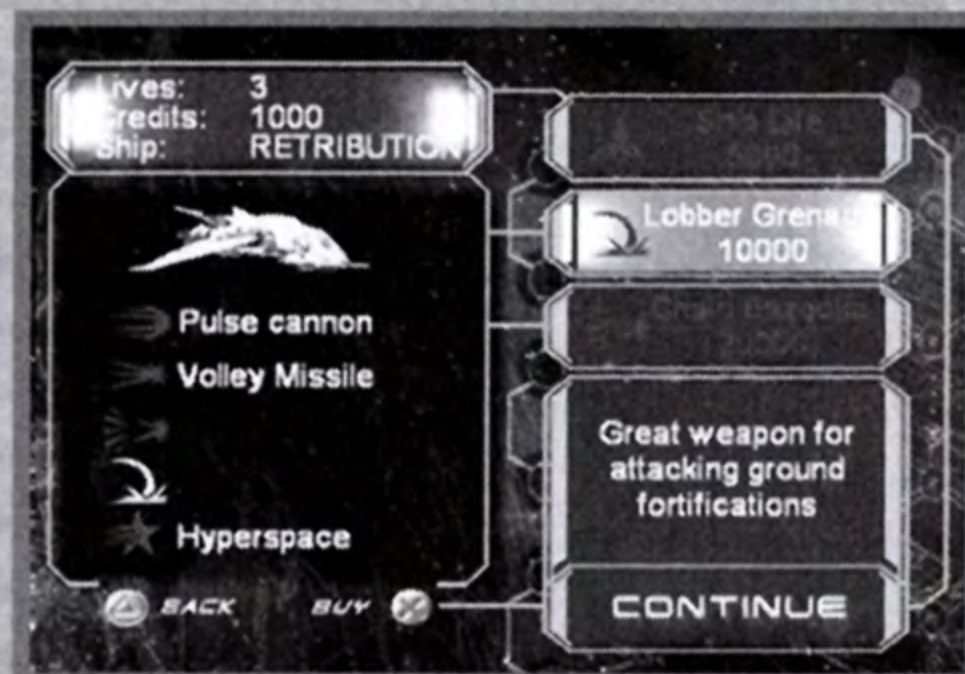


After selecting the planet and your mission, it's now time to choose your spaceship from the hangar. Press **↑**, **↓**, **←** or **→** on the left analog stick to cycle through the displayed ships. As you complete missions, more ship choices will be unlocked. Once you have made a decision, press the **⊗** button to accept.

PLAYING THE GAME

EXTRA SUPPLIES

After your spaceship selection you'll be brought to a screen where you'll have the opportunity to purchase weapon upgrades and extra lives. You start out with 1000 credits. When continuing a previously saved game, you may have more credits built up to make more expensive upgrades.



Once you have made your purchases or if you choose not to upgrade at this time, press **↑** or **↓** on the left analog stick to highlight CONTINUE and press the **ⓧ** button to begin your campaign.

DURING THE GAME

Each Defender ship is essentially controlled by its pitch and its roll. The pitch determines the change in elevation, the roll determines how fast the craft steers into a turn.

Thrusters cause your ship to accelerate forward or in reverse. If you don't apply your thrusters your ship gradually slows down to its minimum flying speed. If your ship is on the ground it will slow to a halt.

There is a maximum elevation that a Defender ship can reach. At this elevation you may still point your nose above the horizon line, but you cannot increase your elevation.



Turn ship using left analog stick.

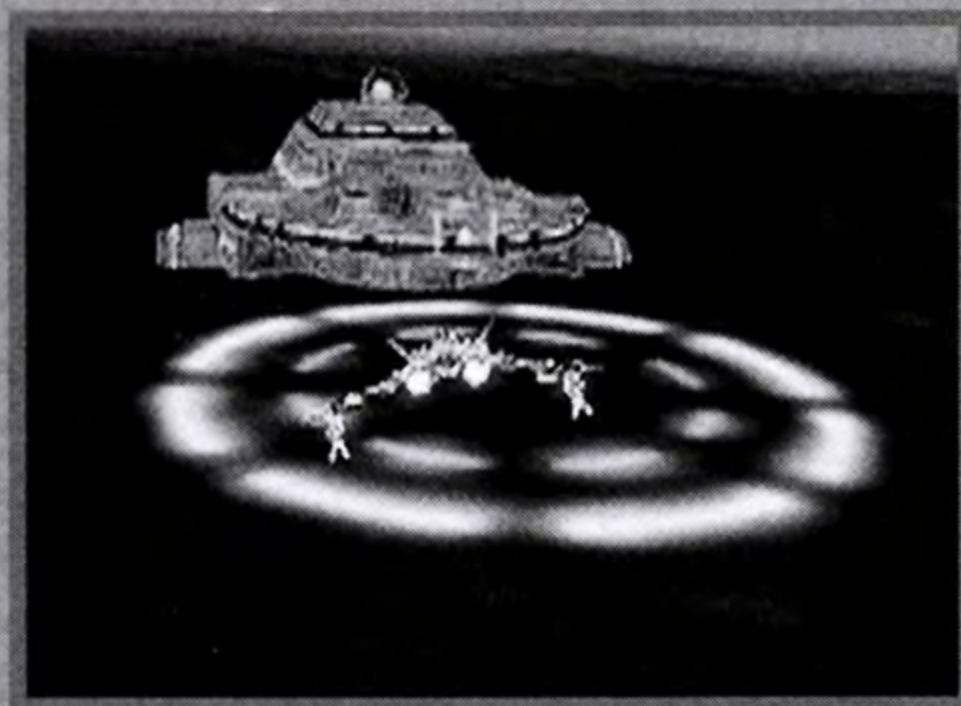


Pick up colonists on the ground.

Because the Defender ship must often dive toward the ground to pick up or put down objects, it's designed to survive scrapes with the ground. The craft automatically levels out and drags along the ground (slowing down and kicking up dust). Running into the ground doesn't damage the ship, it only slows it down.

PLAYING THE GAME

The Defender can pick things up by flying into them either on the ground or in the air. Things that should be picked up, like colonists, tanks and so forth automatically hook on to the ship. Colonists automatically detach from your ship only if you fly into a landing pad on the ground. Use your R3 button to detach them anywhere else. Other items, like tanks, unhook from your ship on their own when you fly into the ground.



Drop off colonists on flashing target.



Dodge enemies quickly using the right analog stick.

Use the right analog stick to perform advanced flying maneuvers. You'll be able to perform Barrel Rolls, 180° and 360° turns. These are helpful by allowing you to quickly change directions in order to make a quick pick-up or help you avoid enemy fire.

BONUS TIPS:

- Remember to take colonists back to the drop zone if you need power ups.
- Use your map. Press the SELECT button while in a mission to bring up a tactical map of the level that will show you the location of colonists and enemy units.
- Remember that you have a special weapon on board. It's limited, so use it wisely.



PLAYING THE GAME

HEADS UP DISPLAY (HUD)

The HUD contains all the on screen information you'll need during a game. The information below features callouts of what you'll see on the screen.



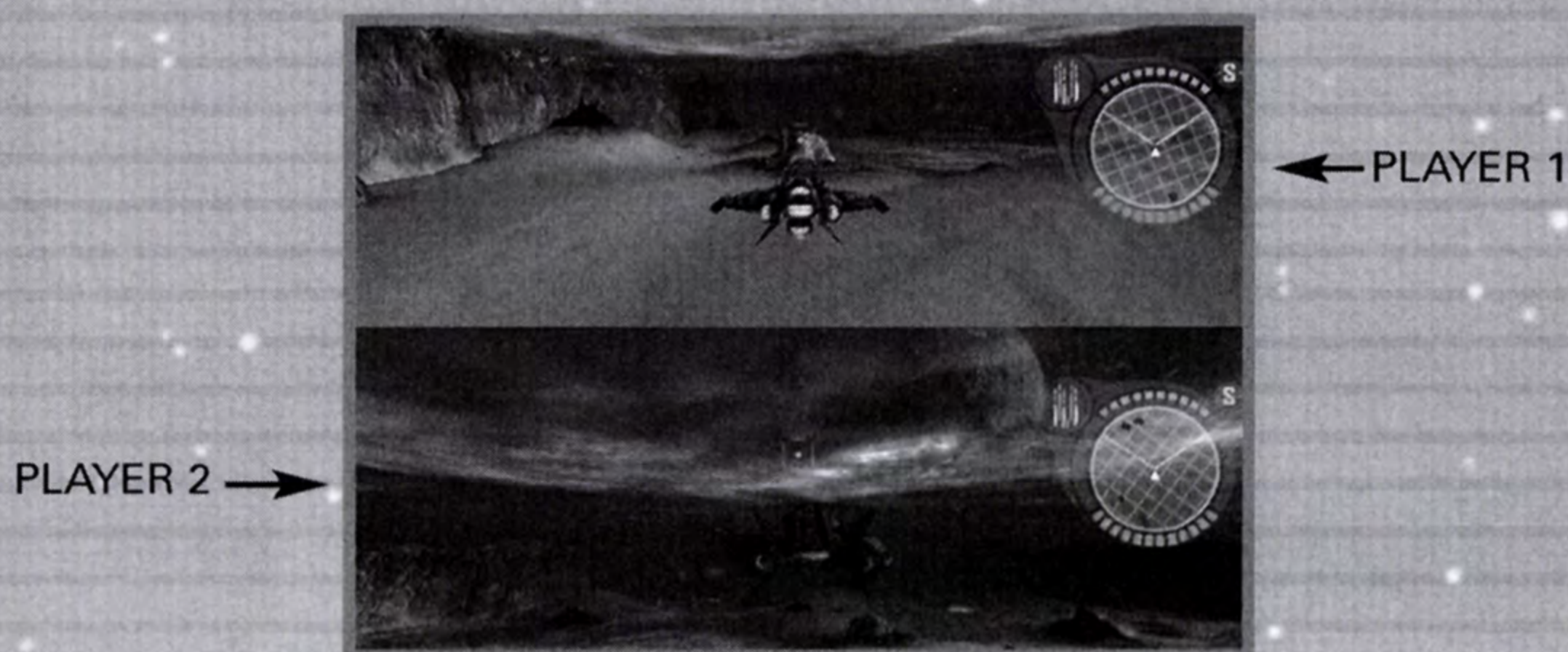
2 PLAYER

The 2 PLAYER menu contains two game modes. From the Main menu, highlight 2 PLAYER and press the **X** button to access the 2 PLAYER menu.

NOTE: You must have two DUALSHOCK®2 analog controllers inserted into CONTROLLER PORTS 1 and 2 in order to access the 2 PLAYER menu.

Once you have accessed the 2 PLAYER menu, select between Deathmatch and Cooperative mode. Once a mission is agreed upon and selected from the Mission Select screen you'll be brought to the Spaceship Select menu where each player will be able to choose their own ship.

2 PLAYER HUD



Player 1 will appear on the top half of the screen while Player 2 will appear on the bottom half. All HUD displays are the same as pointed out on the previous page.

DEATHMATCH

In Deathmatch mode you and a friend will battle against each other. It's a one on one dogfight to win the game by destroying your opponent before he destroys you!

COOPERATIVE

In Cooperative mode, you and a friend work together to rescue colonists as well as destroy enemy forces.

DEFENDER UNIVERSE

FROM THE BEGINNING

When the First Swarm came to Earth, we didn't know what hit us. The skies went dark as they filled with Manti bugs. Manti consume human DNA to survive and power their fleet. Soon whole cities were consumed and harvested by the ravenous swarm. Once harvested, infected humans become dangerous mutants turning on their own by attacking humans in battle. Fleeing to the Solar Colonies, our species grew scattered and weak. By the time the Second Swarm arrived, the Earth was barely fit for human life. Now the Second Swarm is well underway. The Manti have taken the Earth as their own homeworld. If there is a Third Swarm, human life will not survive it. The Manti threat must soon be eliminated if the human species is to continue to survive.

Human resistance is led by a coalition of galactic troops known as the GSA (Galactic Stargate Authority). Headquartered at Cydonia Base, Mars, GSA troops cross the galaxy using a network of stargates to attack Manti outposts. Only bold GSA Defenders, the elite pilots of the Galactic Stargate Authority, stand in the way of human extinction. No treaties can be made, no peace can be reached.

Manti have hijacked Earth as their new homeworld. It's not looking good for mankind. This is where you come in. You've enlisted in the Swarm Wars and you're going to drive the deadly Manti out of the solar system once and for all.

COLONISTS

SAVED COLONISTS

Saving colonists during a mission earns you credits to buy cool new weapons. You can drop colonists off at a drop zone to get power ups. Power ups will restore your health and reload your weapon rack. If you drop the colonists off at a missile crawler or tank factory, you can build your own army for ground and air defense. For every three colonists you drop off at a tank factory, you can build one tank. For every two you drop off at a missile crawler factory, you can build one missile crawler.

ABDUCTED COLONISTS

In Defender, colonists are the resource for both the human resistance and the Manti. Colonists that you save in missions help research new technology, build new ships and provide reinforcements. Colonists captured by aliens are mutated into new Manti Craft or allow Manti Craft to mutate into more dangerous forms.

As in the original, if a lander captures a colonist and holds him in orbit for an appropriately long period of time that lander becomes a mutant. While landers are pretty wimpy, mutants are tough opponents.

SHIP TYPES



DEFENDER

SPEED = 400 M/S
ARMOR = 75
AGILITY = 180
STRENGTH = 150
SPECIAL WEAPON = ENERGY SHIELD

The Defender is the staple of the GSA air force. It's fast, reliable and gets the job done.



DEFIANCE

SPEED = 600 M/S
ARMOR = 125
AGILITY = 180
STRENGTH = 125
SPECIAL WEAPON = PULSE MINE

An upgrade to the Defender ship, the Defiance is faster, sleeker and packs a heavier punch.



GUARDIAN

SPEED = 300 M/S
ARMOR = 150
AGILITY = 120
STRENGTH = 250
SPECIAL WEAPON = HYPER SPACE

Slow, but mean. The Guardian can take a beating and dish one out.



JUDGMENT

SPEED = 250 M/S
ARMOR = 300
AGILITY = 100
STRENGTH = 300
SPECIAL WEAPON = ENERGY SHIELD

It's bulky and tough to maneuver, but what it lacks in speed and agility, it makes up for in armor and strength.



NEMESIS

SPEED = 500 M/S
ARMOR = 50
AGILITY = 180
STRENGTH = 150
SPECIAL WEAPON = SMART BOMB

Although vulnerable to enemy fire, the Nemesis is fast, agile and sports a cool weapon rack.



RETRIBUTION

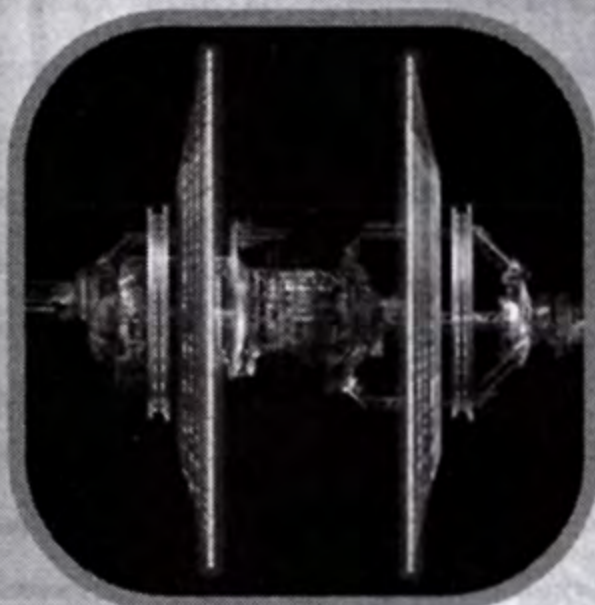
SPEED = 900 M/S
ARMOR = 75
AGILITY = 270
STRENGTH = 100
SPECIAL WEAPON = HYPER SPACE

This ship is as fast as they get. The Retribution leaves the Manti in its dust.

KEY PLAYERS & MANTI

DEFENDERS OF THE HUMAN RACE

Man, woman and machine play a key role in the defense of the human race.



BATTLESHIP MEMORY

The biggest ship ever built by humans. Memory is the size of a small moon, and with her AI she practically runs the fleet from any sector in space.



KYOTO

Rookie Defender pilot with promise. If she can take a beating, she can hang with the big bugs.



COLONEL ADAMS

Kyoto's CO, Colonel Adams, is one cranky old son of an Earther, but he's crushed more Manti than anyone else in the fleet & he knows the drill.



DR. MUDO

A doctor at GSA Research who thinks he's onto something. He believes he has a new weapon that will eradicate the bug threat forever

MANTI



LANDER (FLYING MANTI)

A floating craft intended to harvest DNA from various life forms. The lander can harvest people for mutations. A lander and a colonist produce a mutant.



MUTANT (FLYING MANTI)

A fast, tough and accurate air based unit. A mutant can also harvest humans, although it is less inclined to than a lander.



OGRE (GROUND MANTI)

Also know as "Widows", these Manti will turn colonists into Infectors.



MORE MANTI TO BE DISCOVERED!

CREDITS

MIDWAY HOME ENTERTAINMENT

PRODUCER

David Brooks

ASSOCIATE PRODUCER

Hans Lo

ASSISTANT PRODUCER

Sheila Julaton Manansala

TEST MANAGER

Rob "Bobby" Sablan

TEST SUPERVISOR

Brian Davis

LEAD PRODUCT ANALYST

John Bozeman

PRODUCT TESTING ANALYSTS

Darci Morales, Nicholas Louie, Justin Vancho, Christine Penley, Brady Mercy, Jake Rosewall, Jim Sanders & Myong Hong

TECHNICAL STANDARDS ANALYSTS

Rick Blair & Adam Bailey

TECHNICAL DIRECTOR

Eric Hart

ART DIRECTOR

Craig Rundels

PRODUCT MANAGER

Patrick Dillon

SENIOR VP, PUBLISHING

Mark Beaumont

VP, MARKETING

Helene Sheeler

DIRECTOR, ENTERTAINMENT MARKETING

Lawrence Smith

DIRECTOR, PUBLIC RELATIONS

Marci Ditter

PUBLIC RELATIONS MANAGER

Jay Boor

PRINT DESIGN AND PRODUCTION

Midway Creative Services, San Diego

MOTION CAPTURE TALENT

John Kaiser

Chanel Penley

SPECIAL THANKS

Neil Nicastro, Christa Wittenberg, May Cam, Rey Galza, David Tokheim, Dawson Vosburg, Christa Woss, Bill O'Neil, Ken Fedesna, Darrin Stubbington, Michael Abbot, Paul Lefevre, Che-Yuan Wang, Eugene Jarvis, Debbie Fulton, Rob Gustafson, Michelle Savoie, Aurora Romans, Brenda Wilson, Serena Chan, Chris Leebolt, Saleem Crawford, Rommel Abalos, Lae Hatlavongsa, Brian Cassi, Aimee Tangog & Tony Drake

CREDITS

SEVEN STUDIOS

DIRECTOR

George Collins

ENGINEERING

Chief Software Engineer - George Suttly

Technical Director - John Keating

Lead Programmer - Brian Hawkins

Programmers - Ed Baum, Chris Buchanan, Daniel Chuang, John Cooke & Kim Lay

ADDITIONAL ENGINEERING PROVIDED BY

Tom Ketola & Dan Stanfill

ART

Art Director - Damon Conn

Lead Artist - Miguel Lleras

Artists - Jon Balmer, Scott Fabianek & Nelson Plumey

ADDITIONAL ART

Ivan Bouinatchov, Barclay 'Buck' Chantal & Kenzie Lemar

DESIGNERS

Robert Berger, Rich Bisso, Jeff Gardiner & Michael Kirkbride

MISSION SCRIPTING

Ivanna Kartarahardja & Nathan Mah

STORY AND DIALOGUE

Robert Berger, Michael Kirkbride & Margaret Stohl

PRODUCTION

Executive Producer - Lewis Peterson

Producers - Matt Candler & Christine Thomas

Assistant Producer - Alex Garcia

MUSIC

Provided by Midway Home Entertainment

ADDITIONAL MUSIC BY

Jon 'Rock on Chicago' Balmer

FMV AUDIO PRODUCTION

Keith Arem

FMV SOUND DESIGN

Keith Arem

FMV ORIGINAL MUSIC

Michael Cohen

VOICE OVER RECORDING PERFORMED BY

Soundelux Design Music Group & PCB Productions

VOICE OVER ENGINEERS

Keith Arem & R. Dutch Hill

SOUND DESIGN & DIRECTION

Michael Kirkbride, Matt Candler & Robert Berger

CREDITS

SEVEN STUDIOS CONTINUED...

ADDITIONAL SOUND FX PROVIDED BY
Scorpio Sound, LLC

SUPERVISING SOUND DESIGNER
Gregory J. Hainer

SOUND DESIGNER
Michael Kamper

COMMANDER KYOTO
Traci Elizabeth Lords

COLONEL ADAMS
Noah Nelson

MEMORY
Valerie Arem

DR. MUDO
Eric Passoja

ADDITIONAL VO PROVIDED BY
Lex Lang, Perry Zombolas, Jason Lee & Dave Wittenberg

SPECIAL THANKS
Lorraine Conn, Harrison Hays, Scot Kramarich, Chane Parker, Lewis Peterson, Margaret Stohl, Lisa Whitman & Erik Yeo

SONY DEVELOPER SUPPORT ENGINEERS
Geoff Audy & Dave Coombes

METROWERKS TECHNICAL SUPPORT
Gabe Ahn & Becky Hook

DEFENDER TEST SQUADRON
Sam Alper, Rory Behr, AJ Calabrese, Alex Chen, Bobby (SC) Hill, Tory Hill, Martine Johanneson, David Leohong, Danny Nguyen, Adam Payne, Emma Peterson, May Peterson, Jack Schwada, Alex Schwada, Spencer Strasmore, David Wagmeister & Johnno Wagmeister

THE DEFENDER TEAM WOULD LIKE TO EXPRESS THEIR THANKS AND GRATITUDE TO

Mom and Dad (all of them), Margarite Fox, Loren Kirkbride, Uncle Atari, Kirsten Stanwyck, Leeds Development Studio (for Wipeout and Colony Wars), The Sea Monkeys, The Bossman, Deanne M. Dickson, Ruben and Prima Plumey, Frank Zappa, George Harrison, John Entwistle, Sharon Cagey, Ben Garcia, ATVI GRADS Fantasy Football League, Caryn Krooth, Carol Gardiner, John Geiger, Flag, Dave 'aka BC' Hammock, John Lemberger, Ethan Heinz, Elmer R. Bisard, Laura L. Ellis, Becky Allen, Amanda Wyatt, Logan Conn, Sara Margaret Stohl, Emma, May & Kate Peterson

CREDITS

"DEFENDER" AND "DEFENDER -- CLUB MIX"

Based on "Also Sprach Zarathustra", composed by Richard Strauss
Produced by Sascha Konietzko, Phil Rieflin & Michael Cozzi for KMFDM, Inc.
KMFDM Appears Courtesy of Metropolis Records

"VAUNT"

Written by Trigger
Courtesy of BlackBlack Records

CLANDESTINE

Written By Adam Hamilton
Performed By Adam Hamilton
Published By Red Engine Music (ASCAP)
All songs Courtesy Of Marc Ferrari/ Mastersource

CYBERTRON

Written By Adam Hamilton
Performed By Adam Hamilton
Published By Red Engine Music (ASCAP)
All songs Courtesy Of Marc Ferrari/ Mastersource

DIG IT

Written By Adam Hamilton
Performed By Adam Hamilton
Published By Red Engine Music (ASCAP)
All songs Courtesy Of Marc Ferrari/ Mastersource

ELIMINATE

Written By Adam Hamilton
Performed By Adam Hamilton
Published By Red Engine Music (ASCAP)
All songs Courtesy Of Marc Ferrari/ Mastersource

EPIC

Written By Adam Hamilton
Performed By Adam Hamilton
Published By Red Engine Music (ASCAP)
All songs Courtesy Of Marc Ferrari/ Mastersource

GO

Written By Adam Hamilton
Performed By Adam Hamilton
Published By Red Engine Music (ASCAP)
All songs Courtesy Of Marc Ferrari/ Mastersource

PLANET CHASING

Written By Adam Hamilton
Performed By Adam Hamilton
Published By Red Engine Music (ASCAP)
All songs Courtesy Of Marc Ferrari/ Mastersource

RUN

Written By Adam Hamilton
Performed By Adam Hamilton
Published By Red Engine Music (ASCAP)
All songs Courtesy Of Marc Ferrari/ Mastersource

SHINING THROUGH

Written By Adam Hamilton
Performed By Adam Hamilton
Published By Red Engine Music (ASCAP)
All songs Courtesy Of Marc Ferrari/ Mastersource

STRIPMINE

Written By Tim Paruszkiewicz and Stephen Phillips
Performed By Tim Paruszkiewicz and Stephen Phillips
Published By Revision West (BMI)
All songs Courtesy Of Marc Ferrari/ Mastersource

The following information applies to the Lua portions of the software ONLY. No permission is granted under any circumstances for the copying of any software that belongs to and/or is copyrighted by Midway

Lua © 1994 – 2000 TeCGRAF, PUC-Rio. All rights reserved.

Permission is hereby granted, without written agreement and without license or royalty fees, to use, copy, modify, translate, and distribute this software and its documentation (hereby called the "Package") for any purpose, including commercial applications, subject to the following conditions:

- The above copyright notice and this permission notice shall appear in all copies or substantial portions of this package.
- The origin of this package must not be misrepresented; you must not claim that you wrote the original package. If you use this package in a product, an acknowledgement in the product documentation would be greatly appreciated (but it is not required).
- Altered source versions must be plainly marked as such, and must not be misrepresented as being the original package.

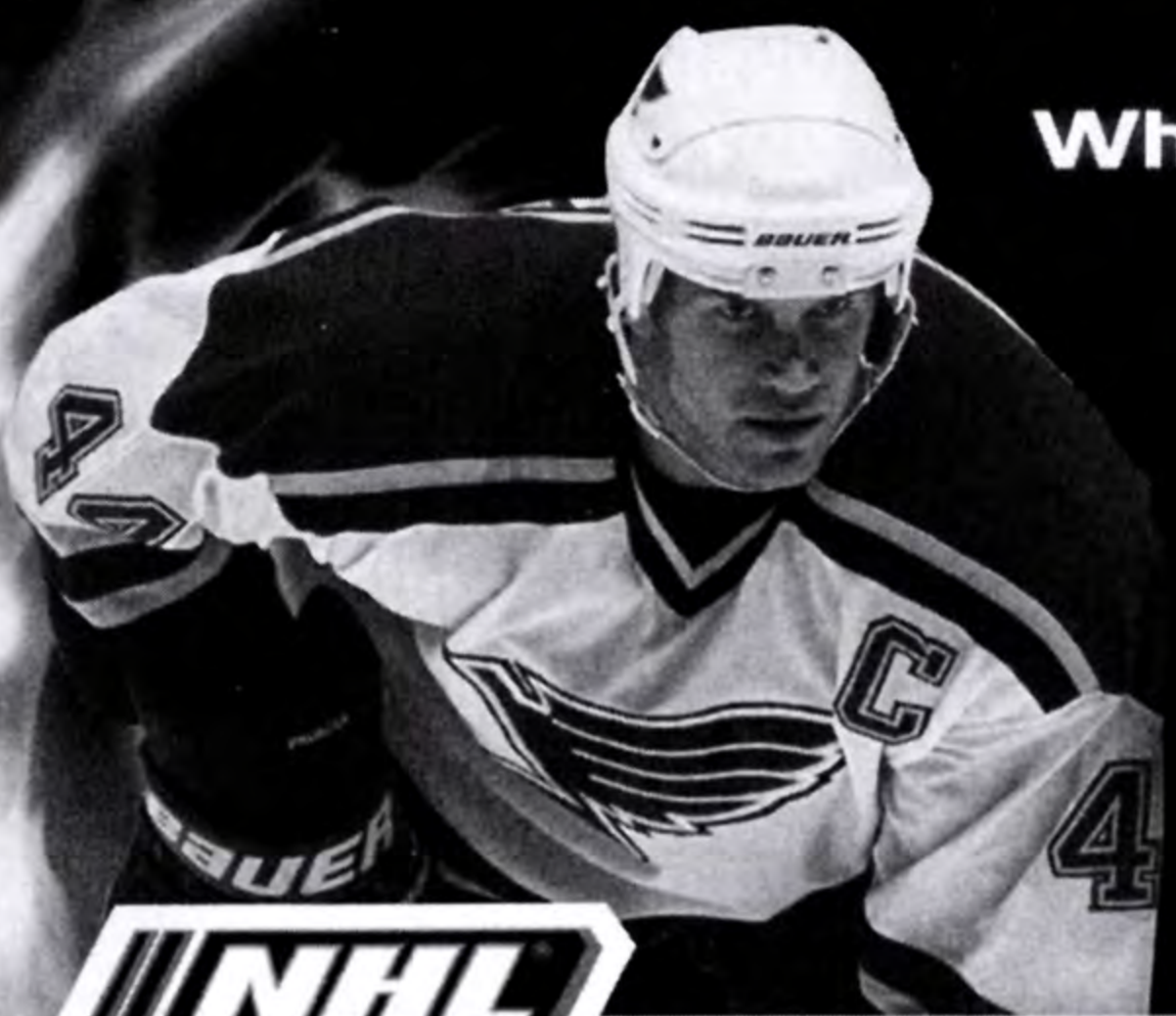
The authors specifically disclaim any warranties, including, but not limited to, the implied warranties of merchantability and fitness for a particular purpose. The package provided hereunder is on an "as is" basis, and the authors specifically disclaim any warranties, including, but not limited to, the implied warranties of merchantability and fitness for a particular purpose. The package provided hereunder is on an "as is" basis, and the authors have no obligation to provide maintenance, support, updates, enhancements, or modifications. In no event shall TeCGRAF, PUC-Rio, or the authors be held liable to any party for direct, indirect special, incidental, or consequential damages arising out of the use of this package and its documentation.

The Lua language and this implementation have been entirely designed and written by Waldemar Celes, Roberto Leruslimschi and Luiz Henrique de Figueiredo at TeCGraf, PUC-Rio in Brazil.

This implementation contains no third party code.

What's Hockey without HITZ?

AVAILABLE NOW



NHL HITZ 2003

IGNITE YOUR GAME

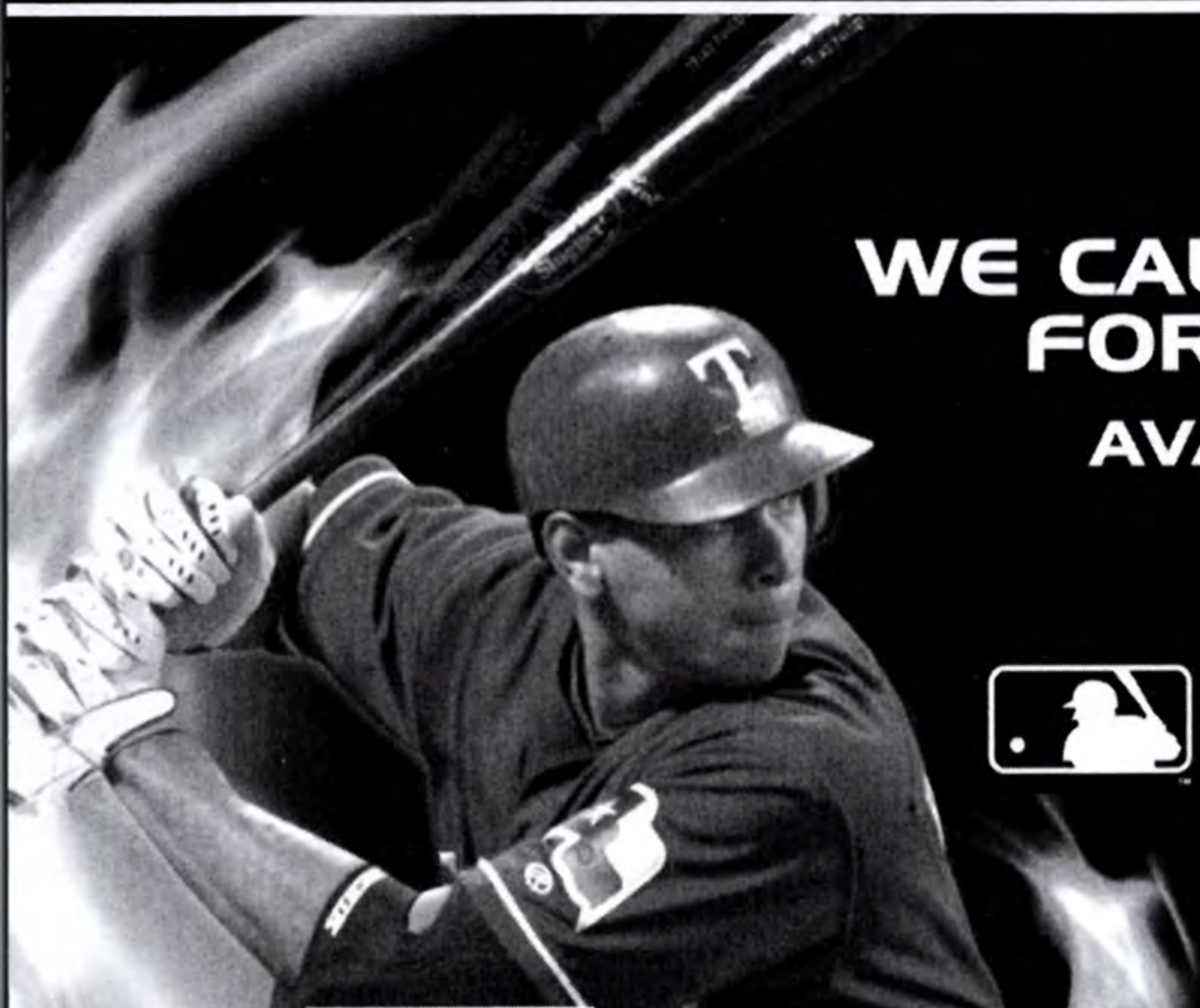


MIDWAYSPORTS.NET

NHL® Hitz™ 20-03 © 2002 Midway Home Entertainment Inc. HITZ is a trademark of Midway Home Entertainment Inc. MIDWAY and the Midway logos are trademarks or registered trademarks of Midway Amusement Games, LLC. Used by permission. NHL and the NHL Shield are registered trademarks of the National Hockey League. All NHL logos and marks and team logos and marks depicted herein are the property of the NHL and the respective teams and may not be reproduced without the prior written consent of NHL Enterprises, L.P. © 2002 NHL. All rights reserved. © NHLPA; Officially Licensed Product of the National Hockey League Players' Association. National Hockey League Players' Association, NHLPA and NHLPA Logo are trademarks of the NHLPA and are used, under license, by Midway Home Entertainment Inc. "PlayStation" and the "PS" Family logo are registered trademarks of Sony Computer Entertainment Inc.

WE CALL IT SLUGFEST
FOR A REASON.

AVAILABLE NOW!



MLB SLUGFEST 2003



MLB® Slugfest® 20-03 © 2002 Midway Amusement Games, LLC. All rights reserved. SLUGFEST, MIDWAY and the Midway logos are trademarks of Midway Amusement Games, LLC. Used by permission. Major League Baseball trademarks and copyrights are used with permission of Major League Baseball Properties, Inc. Visit the official web site at MLB.com. MLBPA - Official Licensee. Major League Baseball Players Association. Visit the Players Choice on the web at www.bigleaguers.com. Distributed under license by Midway Home Entertainment Inc. "PlayStation" and the "PS" Family logo are registered trademarks and DUALSHOCK® is a registered trademark of Sony Computer Entertainment Inc.

WARRANTY

MIDWAY HOME ENTERTAINMENT INC. warrants to the original purchaser of this Midway Home Entertainment Inc. software product that the medium on which this computer program is recorded is free from defects in materials and workmanship for a period of ninety (90) days from the date of purchase. This Midway Home Entertainment Inc. software program is sold "as is," without express or implied warranty damages of any kind, and Midway Home Entertainment Inc. is not liable for any losses or damages of any kind resulting from the use of this program. Midway Home Entertainment Inc. agrees for a period of ninety (90) days to either repair or replace, at its option, free of charge, any Midway Home Entertainment Inc. software product, postage paid, with proof of purchase, at its Factory Service Center.

This warranty is not applicable to normal wear and tear. This warranty shall not be applicable and shall be void if the defect in the Midway Home Entertainment Inc. software product has arisen through abuse, unreasonable use, mistreatment or neglect.

THIS WARRANTY IS IN LIEU OF ALL OTHER WARRANTIES AND NO OTHER REPRESENTATIONS OR CLAIMS OF ANY NATURE SHALL BE BINDING ON OR OBLIGATE Midway Home Entertainment Inc. ANY IMPLIED WARRANTIES APPLICABLE TO THIS SOFTWARE PRODUCT, INCLUDING WARRANTIES OF MERCHANTABILITY AND FITNESS FOR A PARTICULAR PURPOSE, ARE LIMITED TO THE NINETY (90) DAY PERIOD DESCRIBED ABOVE. IN NO EVENT WILL MIDWAY HOME ENTERTAINMENT INC. BE LIABLE FOR ANY SPECIAL, INCIDENTAL, OR CONSEQUENTIAL DAMAGES RESULTING FROM POSSESSION, USE OR MALFUNCTION OF THIS Midway Home Entertainment Inc. SOFTWARE PRODUCT.

Some states do not allow limitations as to how long an implied warranty lasts and/or exclusions or limitations of incidental or consequential damages so the above limitations and/or exclusions of liability may not apply to you. This warranty gives you specific rights, and you may also have other rights which vary from state to state.

Midway Home Entertainment Inc.

675 Sycamore Dr.

Milpitas, CA 95035

www.midway.com

Midway Customer Support

(408) 473-9499

10:00am - 6:30pm / Central Time

Monday - Friday

Automated help line open 24 hours a day

COMING FALL 2002

HAVEN

CALL OF THE KING™



Mild Violence



Haven: Call of the King © 2002 Midway Home Entertainment Inc. All rights reserved. MIDWAY and the Midway Logo are registered trademarks of Midway Amusement Games, LLC. Used by permission. Haven: Call of the King is a trademark of Midway Home Entertainment Inc.



COMING
FALL
2002!

Dr. Muto © 2002 Midway Games West Inc. All rights reserved. MIDWAY and the Midway Logo are registered trademarks of Midway Amusement Games, LLC. Used by permission. DR. MUTO is a trademark of Midway Games West Inc. Distributed under license by Midway Home Entertainment Inc.

MIDWAY HOME ENTERTAINMENT, 675 Sycamore Drive, Milpitas, CA 95035

Licensed for play on the PlayStation 2 computer entertainment systems with the NTSC U/C designation only. "PlayStation" and the "PS" Family logo are registered trademarks of Sony Computer Entertainment Inc. The ratings icon is a trademark of the Interactive Digital Software Association. Manufactured and printed in the U.S.A. THIS SOFTWARE IS COMPATIBLE WITH PLAYSTATION 2 CONSOLES WITH THE NTSC U/C DESIGNATION. U.S. AND FOREIGN PATENTS PENDING. U.S. AND FOREIGN PATENTS PENDING.



Comic Mischief
Mild Language
Mild Violence
Suggestive Themes